

welcome

Welcome to Ski Academy Switzerland (SAS) provider of the most affordable ski instructor, internship, performance training and educational courses on the market. Our courses are based in the middle of the Swiss Alps where we can offer high quality instructor and personal development programmes including:-

SAS Certificate of Excellence – Instructor and Internship Courses from 2 to 4 weeks

Ski Instructor Development – ISIA and ISTD training (for all systems)

Race Coaching Courses – UK and USSA courses

Alpine Ski Leader Courses for School teachers and Group Leaders

We have many close links with European and USA ski schools and will be working with our new partner International Snowsports School (ISS). ISS's partnership will ensure that many of our ex-students have the opportunity to instruct and coach in ski resorts all over the world!

Our courses run throughout the year from Spring to Winter and it is important that you book on to courses as early as possible to avoid disappointment.

We hope there is a course for you and we will try our best to accommodate your needs so please don't hesitate to contact us if you require additional information.

For all the updated information please try our SAS website which includes special offers and the latest course news.

THE NO 1 SNOWSPORTS INSTRUCTOR PROVIDER FOR ALL YEAR ROUND TRAINING PROGRAMMES



SALOMON 

international
SNOWSPORT SCHOOL



Saas-Fee

S A A S T A L

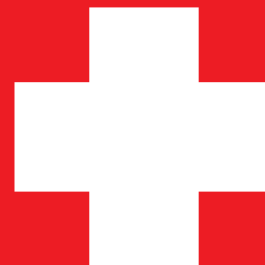


SNOWSPORT SCOTLAND
The national governing body for skiing and snowboarding

www.skiacademyswitzerland.com

WHY WE ARE NUMBER ONE

- SAS can guarantee that we won't be beaten on our prices for standard of training we deliver! The only training provider to do this.
- We are the only European training provider to offer the prestigious USSA coaching certifications.
- We have a proven record and students who have attended our instructor and performance courses over the last six seasons have managed to obtain a 98% pass rate!
- We are not a ski school, but an independent training school (unlike many training providers) which means we can offer more training and skiing time for less as we don't have to pay hefty bills for ski instructors who are contracted in from a local ski school. The people who run SAS are also the same people who train, live and work in the resort with the students and we pride ourselves on the highest quality of training at good affordable prices.
- We deliver the most extensive training of any ski training provider.
- We have chosen three of the best resorts in Switzerland and Europe. Gstaad, Villars and Saas-Fee offers world class skiing and good lively après ski to match.
- We have an excellent relationship with Silver Sport, a ski and snowboard specialist shop providing SAS students with excellent discounts and can help in every aspect of equipment and set up.
- Once students have qualified with SAS the ski instructor lifestyle has only just begun! We have many close links with European and USA ski schools and we can help you find ski instructor work after any of our programmes. Many of our ex-students are now using their newly acquired skills to enjoy a new lifestyle instructing in ski resorts all over the world!
- Each student shadows and experiences actual hands on teaching with a recognised ski school
- We place students in comfortable hotel accommodation with meals provided seven days a week.
- The SAS coaches and reps are on call 24/7 if there are any problems that might arise.
- We are based in the middle of the Swiss Alps where we can offer French and German language lessons.



academy
switzerland

coaches and staff

James Wilkinson

Director

e: james@skiacademyswitzerland.com

Sam Gibson

New Zealand and BASI Coach

Jenna Barron

BASI ISIA Instructor

Iwan Fuchs

Swiss ISIA Instructor

Duncan Adamson

BASI Coach/Trainer

Regina Wilson

Office Manager

e: info@skiacademyswitzerland.com

The coaching team that SAS use possess great dedication and ability with experience teaching and examining at the highest level in Europe, North America and New Zealand. When you enrol with SAS, you can count on coaching that is customized to teach you the exact skills to progress and fulfil your potential. The coaches employed by SAS are English speaking (British); internationally qualified and are members of the ISIA and IVSI.

Ski Academy Switzerland sets a very high standard and over the past six seasons we have managed to achieve a 98% pass rate on all our BASI and PSIA instructor courses

SAS is proud to be associated with BASI (British Association of Snowsport Instructors), PSIA (Professional Ski Instructors' of America), USSA (United States Ski and Snowboard Association) and the UK governing body Snowsport Scotland (SSS). SAS has many close links with European and USA Ski Schools and are always looking to improve worldwide relations to ensure future employment for our trainee instructors.

ABOUT BASI, PSIA, USSA AND SNOWSPORT SCOTLAND

BASI and PSIA are recognised worldwide as a provider of training and assessment of snowsport instructors from all over the world.

BASI and PSIA qualifications are of the highest quality and they are part of the International Ski Instructors Association (ISIA) which sets the standards for the training of snowsport teaching professionals. SAS is proud to be associated both with BASI and PSIA.

We will be offering the BASI and PSIA qualifications, both of which allows you to work in Europe, Canada, USA, NZ and many other destinations.

USSA is the national governing body for Olympic skiing and snowboarding, and the parent organization for the U.S. Ski Team and U.S. Snowboarding. USSA Education is responsible for providing educational resources and opportunities to over 3,500 member coaches. A multi-level certification program provides training in sport-specific techniques and tactics, sport sciences, and sport management.

SSS is the National Governing body for all snowsports that take place on snow and artificial slopes in Scotland and the UK. SSS awards form part of the UK Snowsports Pathway. This exciting new development means that the same awards are given by the home nation governing bodies across the UK and awards are valid throughout the UK.

SAS has also developed a 'PSIA European Pathway' which will keep the qualification in line with other European qualifications. For more information please look at the SAS website.

INSTRUCTOR COURSES

PSIA

We offer the PSIA Level 1 and Level 2 certifications. Each exam can be completed as a fast-track option which vary in length from 2 – 4 weeks. The above courses will be on offer throughout the year.

Outcomes

PSIA Level 1 – The certification is designed for those wishing to find employment in a mountain environment teaching beginner and intermediates skiers.

PSIA Level 2 – Level 2 certified instructor demonstrates the ability to relate movements and skill areas to movement outcomes and to apply that knowledge to teaching situations common to intermediate to advanced skiers.

BASI

Our partners ISS will be offering the BASI Level 1 and Level 2 qualifications. Each exam can be completed as a fast-track option which varies in length from 1 to 4 weeks. These courses will be on offer during the autumn and winter months.

Outcomes

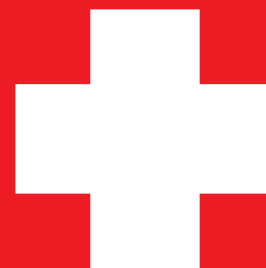
BASI Level 1 – Successful students will be issued a certificate and be able to work within a controlled environment with novice and early intermediate skiers.

BASI Level 2 – Successful students will be able to ski a competent level, and have the knowledge, ability and understanding to safely teach alpine skiing up to and including parallel standard on marked pistes.

PROFESSIONAL DEVELOPMENT AND SSS COURSES

1 to 4 weeks training available for all ISIA/ISTD qualifications (BASI, PSIA, CSIA, NZIA etc.) and the new PSIA European Pathway.

This includes: Personal Development, Mogul Development, Race Training, Off-Piste Training, PSIA Educational Updates, BASI refreshers and Race Coaching Courses.



academy
switzerland

PSIA internship course

The SAS internship scheme which has been subsidised by our partner ski schools is the ideal for course for those looking at qualifying for the PSIA L1 and then working for the rest of the season as a ski instructor!

The Internship Scheme will be available throughout the year and each course will be split into three parts:

1. Training Over the 4 week course the SAS coaches provide a constant personal development ski and teaching programme which covers all modules and every aspect of the PSIA Level 1 syllabus and training for the PSIA Level 2. This will include teaching sessions, shadowing, steeps, bumps, piste and off piste performance.

2. Examination The PSIA Level 1 exam will be completed after the training when students will be fully prepared to tackle the exam. The exam will be over a 2 day period and consist of 1 day teaching module and 1 day technical module. During the teaching modules students will be asked to deliver various lessons in front of their peers with the emphasis on fun! The technical module concentrates on the skiing aspect and will give students the chance to show of their skills against the PSIA Level 1 standards.

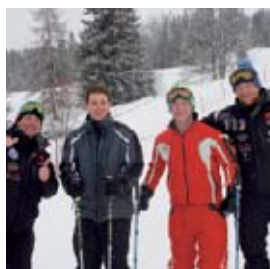
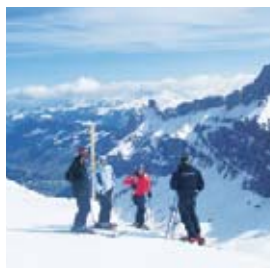
3. Ski School Employment There are two types of ski schools that work alongside SAS:-

- Ski camps provide unique high-quality winter ski programmes and fully supervised on and off evening leisure programmes for school groups of varying ages and abilities. Whilst teaching, you will be in charge of your own group (including adults and students) for the 6 day period; this will be the perfect opportunity to gain some valuable teaching experience, (150hrs required for the PSIA L2 instructor course) improving the students knowledge, skills, and technique whilst getting paid throughout the week! It will be your responsibility to assess the students throughout the week for the Snowsport Snowlife Awards with a timed slalom race and prize presentation to conclude the week.

- Commercial ski schools (Swiss Ski School, Austrian Ski Schools) are usually government run and pay instructors on an hourly basis. Students can be expected to teach all kinds of levels and all kinds of people from the young to the old with the majority of the work over the peak season (Christmas, half term and Easter). As with all ski schools flexibility is the key.

Pre-selection

Applicants must be strong skiers, dedicated to their chosen profession and show a willingness to learn and work in an established ski school with children and adults of all ages. Telephone interviews will be conducted before any applicant is accepted for this programme as places are strictly limited.



WINTER BASI COURSES

We offer the BASI Level 1 and Level 2 on our winter BASI ski instructor courses. The BASI Level 2 qualification is designed for those wishing to safely teach alpine skiing up to and including parallel standard on marked pistes.

The course commences from January until mid March and includes:

- BASI Level 1 Instructor Course (inc. all modules)
- BASI Level 2 Instructor Course (inc. all modules)
- Child Protection
- Personal Ski Development
- Professional Teaching Principles
- Training Material
- Winter season 2011 possible paid work opportunities as a ski instructor work with our partner ski schools (optional).

Please see course calendar for more information on specific courses.

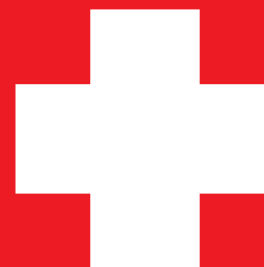
Over the 9 week course the BASI trainer will provide a constant personal development ski and teaching programme which covers all modules and every aspect of the BASI Level 1 and Level 2 syllabus. This will include teaching sessions, ski school, shadowing, mountain safety, steeps, bumps, piste and off piste performance and freestyle.

After students have qualified for the BASI Level 1 we will provide 4 weeks of further training to prepare students for the BASI Level 2 ski instructor qualification. There is also an opportunity for students to take a 2 week extension which includes: UK L2 race coaching course, bumps training course, avalanche awareness and ski tech course.

The winter BASI course will be based in Gstaad.

Pre-selection

Before applying to the winter course, students are required to ski parallel turns confidently and cope with a variety of conditions on red runs.



academy
switzerland

ISIA/ISTD training

We offer training for all English speaking instructor systems and the ISIA/ISTD training weeks have been designed for experienced instructors to move forwards in their career as a Snowsport instructor. The ISIA/ISTD level is a big step forward, but with the help of are experienced top qualified coaches we can fulfil your potential.

The coaches will provide you with constant feedback throughout the ski day with video sessions and personal development programmes in the evening.

A typical week's course includes:

- 25 hrs+ Personal Skiing Performance
- 20 hrs+ Shadowing top instructors
- Skier analysis and leadership skills
- Teaching skills and techniques
- Off-Piste and Mountain Safety
- Race training including Euro-Test and Test Technique

We have many programmes to suit and these can vary in length from 1 to 4 weeks focusing on clients specific needs. Please contact the office for a tailored programme. The ISIA/ISTD training will be based in Gstaad and Saas-Fee.

Please see website or contact the office for more information on specific modules.



RACE AND PERFORMANCE COACHES COURSE

SAS is offering a multi-level certification programme that provides training in sport-specific techniques and tactics, sport sciences and sport management. The UK Level 2 Performance Coach or USSA L100 courses can be taken as separate modules or taken together in conjunction with the new European PSIA Pathway over a 5 day period.

UK Level 2 Performance Coach

A Level 2 performance coach should demonstrate a solid understanding of the fundamentals to performance coaching and be able to plan, implement and analyse long term development programs on artificial ski slopes.

A level 2 coach is authorised to operate within a club or centre environment on artificial ski slopes. The skiers can be ranging from novice to advanced level.

USSA Level 100 Race Coaching Course

The Level 100 certification is designed for entry-level coaches with at least 1-year of coaching experience. It is an introduction to the fundamentals of alpine ski racing and coaching.

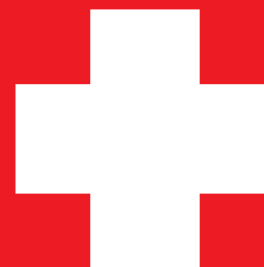
The course last for 5 days and is assessed on the basis of continual assessment.

All coaches beginning the certification process will need to successfully complete the following requirements in order to be a Certified Level 100 Coach:

- Alpine Ski Fundamentals Course, on-snow Level 100
- Coaching Principles (ASEP) Course and exam
- First Aid/CPR Course

All new and current coaches who have achieved their Level 100 Coach Certification will be required to complete a continuing education credit every 2 years. Continuing education credits can be achieved by taking an on-snow clinic, reviewing any of the Elite Performance Series CD-ROMs and successfully passing the related examination and taking an online Sports Management course.

Please see website or contact the office for more information on specific modules.



academy
switzerland

Mogul programmes

Mogul skiing is one of the greatest challenges (and fears!) a skier can face, but once conquered you'll never want to ski anything else! We will be using our specialist mogul ski coaches to teach you the most effective and efficient way to ski bumps. We will give you the knowledge, skills and the latest modern techniques to tackle any mogul field with confidence and style.

The coaches will provide you with constant feedback throughout the ski day with video sessions and personal development programmes in the evening.

A typical week's course includes:

- 25hrs+ Personal mogul ski performance
- Video analysis
- Evening feedback sessions (optional)
- SAS evaluation and debrief

We have many programmes to suit and these can vary in length from 1 to 4 weeks focusing on clients specific needs. Please contact the office for a tailored programme. The mogul programmes will be based in Gstaad, Saas-Fee, Villars and Les Gets (France)

Please see website or contact the office for more information.



FAQ'S

1. Where can I work with a BASI and PSIA qualification?

The qualifications that we offer able you to work in many places in Europe, USA, Canada and many other destinations, while it is fair to say that BASI can get you more work inside Europe, PSIA is more recognised outside of Europe and especially in the States.

2. How much can I expect to earn as a Ski instructor?

This very much depends on the ski school, qualification and where you are applying to. The salary can vary from £9 to £35 (ISIA instructor) per hour in Europe to £6 to £25 (ISIA instructor) per hour overseas. Ski schools in Europe are vastly different from those overseas (the States for example) where ski instructors rely on tips.

3. What level do I need to be to enrol onto a SAS course?

Students must be able to ski red runs comfortably and with confidence.

4. How fit do I need to be?

Obviously the fitter you are the more you will get out of the course. Again there is no set level we ask, but the ability to ski the whole day is essential.

5. Are there any 'hidden' extras?

No, while you are on the course everything is provided for.

6. How much spending money will I need to take?

This depends on how much you like going out! We recommend a minimum of £95 per week for lunch and après ski.

7. Do I need to buy my own equipment?

Yes. It is not a viable or affordable option to rent equipment for such a long period. We have an excellent relationship with the local ski shop and they give all students a very good discount and the coaches will be on hand to recommend specific equipment.

8. Are there any age limitations for the course?

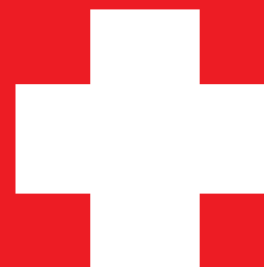
Yes, 17 years and above.

9. What kind of insurance is needed for a SAS course?

Please contact the office for more details.

10. Do we have any free time to ski/ride without training?!

Of course! We realise students are not just here for the ski training much to the coaches disappointment! You will have 2½ days per week to relax and unwind.



academy
switzerland

ski resorts and accommodation



SAAS-FEE

We will be using the ski resort of Saas-Fee for our spring, summer and autumn Programmes. Saas-Fee has a worldwide reputation for its terrain and unrivalled snow used by all the national teams and SAS! Saas-Fee the Pearl of the Alps is situated amidst the highest mountains in Switzerland. In winter the high altitude valley benefits from its elevation and enjoys guaranteed snow.

Apart from being able to ski up to an altitude of 3600m above sea-level, visitors also benefit from a wide variety of slopes, pubs and clubs!

www.saas-fee.ch

The accommodation will be based at the hotel Mischabel. The cost includes half-board accommodation with two people per room. Each room has a balcony, bath or shower, telephone, cable TV, wireless internet connection and safe. The hotel is a 5 min walk to the lift station.

www.mischabel.ch

GSTAAD

For the winter programmes we will be using the ski resort of Schoenreid above the famous ski town of Gstaad... Schoenreid is on the ski gstaad circuit. Gstaad Mountain Rides stands for skiing, snowboarding and pure enjoyment at up to 3,000 meters above sea-level. Thanks to 62 different lifts, a total of 250 kilometres of pistes, rustic huts, sunny terraces and trendy snow-bars invite you to linger on. Gtsaad Mountain Rides comprises six independent ski regions. Included is the Glacier 3000 – the only glacial area in the Berner Oberland – with a guaranteed offer of winter enjoyment from October until the beginning of May.

www.gstaad.ch

All the winter programmes will be based in the Mountain Lodge with doorstep skiing, breakfast, dinner and free internet surfing. The hotel is a 10 min walk from the lift station and town centre.

Please see course calendar for various accommodation rates.

www.alpinelodge.ch

instructor package

	ISIA/ISTD/Moguls/ Instructor	Race Coach	Internship	Winter BASI
PSIA Level 1 Training & Exam	✓		✓	
BASI Level 1& 2 Training & Exam	✓			✓
PSIA/BASI Membership Fees	✓		✓	✓
Ski Tech Awareness Course			✓	✓
Off-Piste Awareness Course			✓	
Video Analysis	✓	✓	✓	✓
Pro Discounts	✓	✓	✓	✓
First Aid Course			✓	✓
Work Opportunities	✓	✓	✓	✓
Personal Ski Performance	✓	✓	✓	✓
Teaching Theory and Practice	✓		✓	✓
Movement Assessment	✓	✓	✓	✓
Course Setting	✓	✓		
Plan of Action	✓	✓	✓	✓
SAS T-Shirt	✓	✓	✓	✓
SAS Membership	✓	✓	✓	✓
Lift Pass	On request	On request	On request	On request
Accommodation	On request	On request	On request	On request
Transfers	On request	On request	On request	On request
Insurance	On request	On request	On request	On request
Language Lessons			On request	On request
Duration	1 week minimum	1 week minimum	4 weeks	9 weeks
Dates	Various see website	Various see website	6 Nov – 4 Dec (A) 8 Jan – 5 Feb (W) 26 Mar – 23 April (S)	8 Jan – 12 Mar
Cost				
Autumn	£200 (Course fees)	£250 (Course fees)	£1165 (excl.) £3300 (incl.)	
Winter	£200 (Course fees)	£250 (Course fees)	£1165 (excl.) £3300 (incl.)	£1776 (excl.) £6500 (incl.)
Spring	£200 (Course fees)	£250 (Course fees)	£1165 (excl.) £3300 (incl.)	